

D.G. Interiors
(INTERIOR TURNKEY SOLUTION)



D.G. Interiors

TABLE OF CONTENTS

1. Company Profile

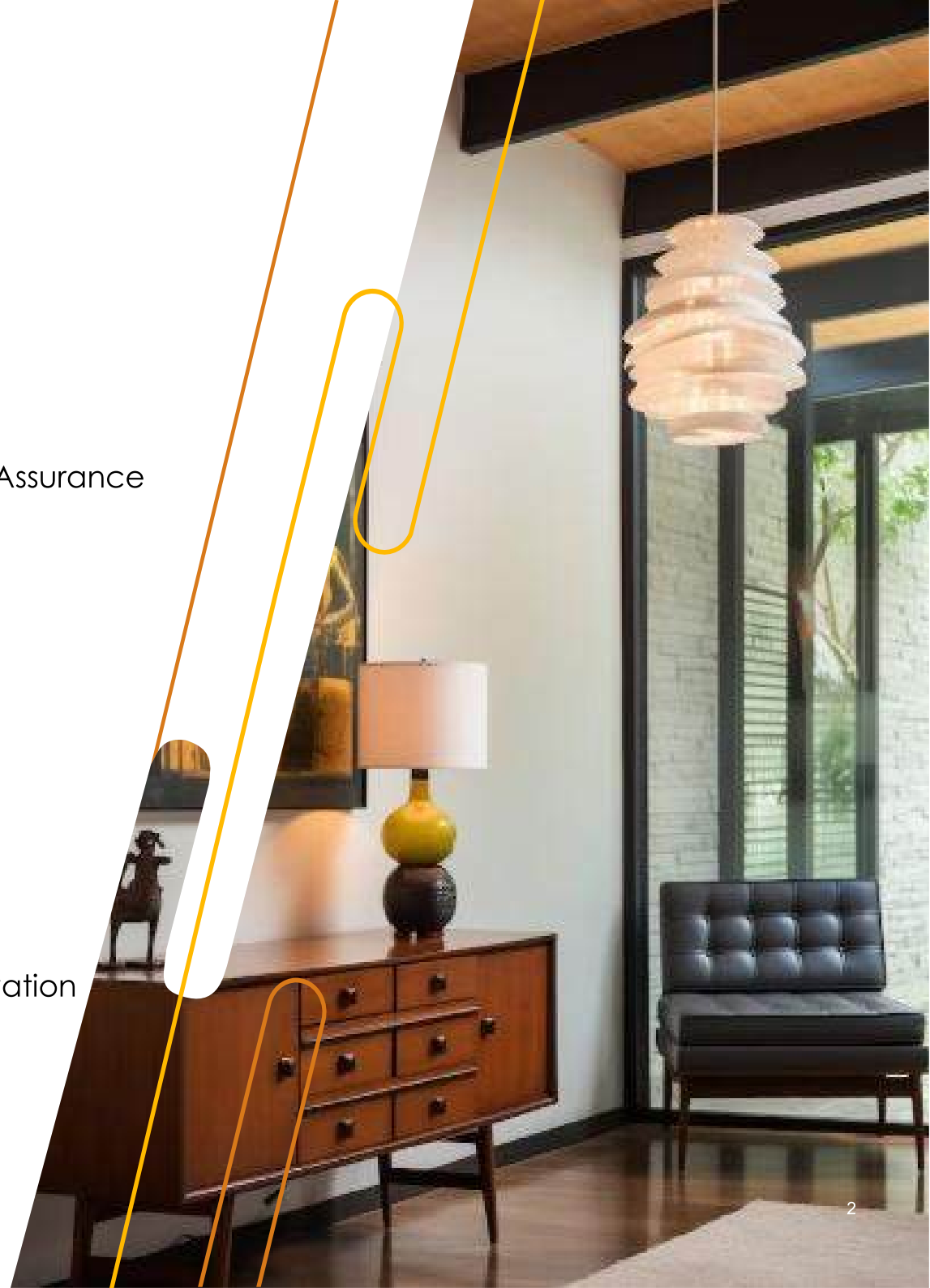
- 1.1 Introduction
- 1.2 Vision
- 1.3 Mission
- 1.4 Interiors Scope We Undertake
- 1.5 Type of Products and Service Offered
- 1.6 Our Personnel / Our Team
- 1.7 D.G. Interiors – Company Objectives & Quality Assurance
- 1.8 Our Prestigious Clients

2. Technical Overview

- 2.1 Interior Design Tools
- 2.2 Process Charts
- 2.3 Turnkey Solutions, Approach & Process

3. Information Details & Photographs

- 3.1 Production Facilities
- 3.2 Architraves & Skirting
- 3.3 Wooden Carving
- 3.4 Marquetry
- 3.5 Fire-Rated & Non-Fire-Rated Doors
- 3.6 Our Factory: Where Craftsmanship Meets Innovation
- 3.7 Some of Completed Projects....
- 3.8 Some of Work Progress



Message from the Founder & MD of D.G. Interiors

At D.G. Interiors, our vision has always been to create spaces that inspire, transform, and elevate everyday experiences. From the very beginning, we have been committed to delivering innovative, high-quality, and timeless interior solutions that not only meet our clients' needs but also exceed their expectations.

Our journey has been built on a foundation of creativity, craftsmanship, and an unwavering dedication to excellence. Every project we undertake is a testament to our passion for design and our deep understanding of aesthetics and functionality. We believe in creating spaces that tell a story—your story.

As we continue to grow, we remain focused on our core values: integrity, collaboration, and a client-first approach. Our team of talented designers and professionals work tirelessly to bring your vision to life, ensuring that every detail reflects your personality and purpose.

Thank you for your trust and support. We look forward to shaping beautiful and meaningful spaces together.



Mr. Dilip Gupta
Founder & MD (Key Person)

1.1 Introduction

Since its establishment in 2008 in Mumbai, D.G. Interiors has earned a strong reputation as an international interior design consultant, turnkey contractor, and supplier of high-end furniture in Asia. Our commitment to perfection and exquisite designs is evident across all our projects, whether classical, modern, or contemporary.

We have successfully completed numerous interior turnkey projects in collaboration with architects, designers, and skilled technicians to ensure superior finishes and décor. Specializing in turnkey interior fit-outs, we deliver quality joinery, timber paneling, solid teak wood outdoor furniture, aluminum glass façades, and more. Supported by global suppliers, we efficiently meet client requirements.

Our comprehensive services include site feasibility studies, conceptual design, technical drawings, project execution, flooring, lighting, engineering, fabrication, and quality control. We work closely with building owners, contractors, and authorities to ensure seamless project completion.

D.G. Interiors thrives on tight deadlines, thanks to a structured team of designers, craftsmen, and coordinators. We prioritize quality, reliability, and cost-effectiveness while ensuring customer satisfaction. Committed to sustainability, we minimize environmental impact, optimize energy use, and incorporate eco-friendly materials. Our in-house development cell fosters innovation, and we value our people as key assets, offering growth opportunities to align personal and organizational goals.



Company Profile



D.G. Interiors

1.2 Vision

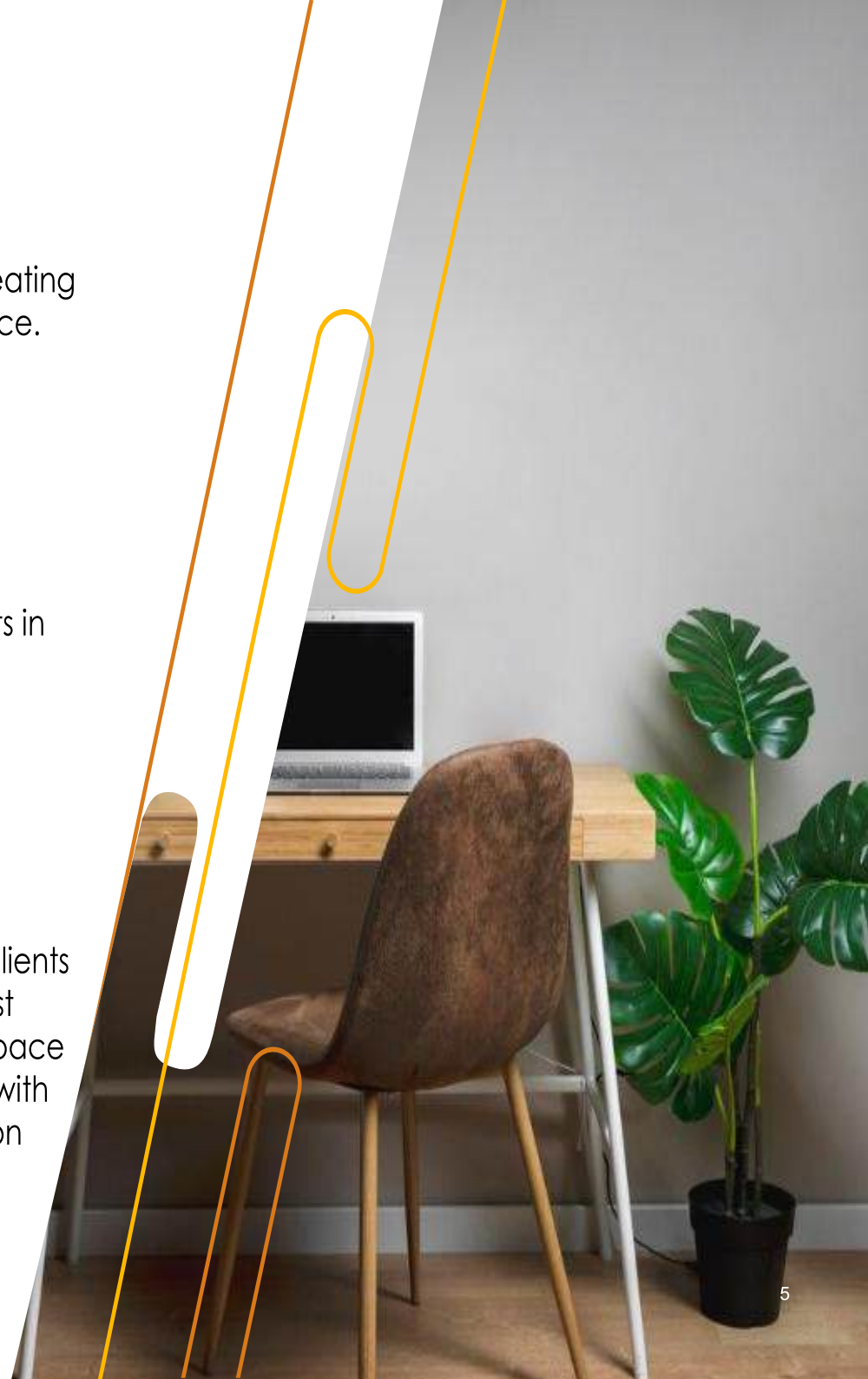
D.G. Interiors will be the leader in the design of the built interior environment. Our work will reflect imagination and intelligence, creating exceptional spaces that enhance and enrich the human experience. Our finished experience will inspire those who experience them.

D.G. Interiors will use innovative approaches to design that are essentially new ways of looking at the enduring questions of living, working and playing in the constructible spaces.

To accomplish this, **D.G. Interiors** believe that we have to be experts in what our clients want. We strive to be specialist in design trends, construction cost, and how they interact.

1.3 Mission

D.G. Interiors is committed to the constructability of client's ideas, translating the idea into the reality. We believe that it takes special expertise to design an outstanding interior space. We will provide clients with the broadest possible range of related services and the highest possible level of expertise. We also believe that the concept of a space will be ultimately fail if it is not first understood and carried through with knowledgeable and creative construction detailing and specification techniques.



1.4 Interiors Scope We Undertake

- Commercial (Retail / Mall Tenant, Restaurant, Bar, Lounge, Café, Club, Coffee Shop, Banks, Spa, Salon, Etc)
- Work Place (Office Space / Office Tenant, Office Lobby)
- Health Care (Hospital, Care Homes, Fitness / Gym Place, Fitness/GymLobby, Clinic)
- Education (Local & International School, Local & International University, Student Accomodation)
- Residential Property (Bungalow, Luxurious Houses, Town Houses, Apartment Lobby, Apartyment, Flat, Show Flat, Mock Up Room)
- Science & Research (Library, Book Store)
- Hospitality (Hotel, Condotel, Resort, Villa, Cottage, Exhibition Hall Conference Room, Lobby)
- Public Sector Building (Station, Airport Terminal, Duty Free Shops, Metro)
- Child Care Place (Game Zone)
- Transport (MRT, Train, Yacht, Super Yacht, Cruise Ship, Ferry, Car / Motor Showroom, Factory)
- Themed Interior, Amusement Park, Museum

1.5 Type of Products and Service Offered

- Commercial (Retail / Mall Tenant, Restaurant, Bar, Lounge, Café, Club, Coffee Shop, Banks, Spa, Salon, Etc)
- Work Place (Office Space / Office Tenant, Office Lobby)
- Health Care (Hospital, Care Homes, Fitness / Gym Place, Fitness/GymLobby, Clinic)
- Education (Local & International School, Local & International University, Student Accomodation)
- Residential Property (Bungalow, Luxurious Houses, Town Houses, Apartment Lobby, Apartment, Flat, Show Flat, Mock Up Room)
- Science & Research (Library, Book Store)
- Hospitality (Hotel, Condotel, Resort, Villa, Cottage, Exhibition Hall Conference Room, Lobby)
- Public Sector Building (Station, Airport Terminal, Duty Free Shops, Metro)
- Child Care Place (Game Zone)
- Transport (MRT, Train, Yacht, Super Yacht, Cruise Ship, Ferry, Car / Motor Showroom, Factory)
- Themed Interior, Amusement Park, Museum



Service we provide, including:

Turnkey Interior Out- Fit From wall to wall and floor to ceiling we offer a total end solution focusing on taking the pressure of our client

Project Management- Our Project Management team oversees every aspect of the fit-out process, we exceeds client expectations and deliver projects within time and budget

Procurement- Our in – house contract material solutions team solve the issues of Procurement for big and small projects right from flooring to finish

FitOuts The scale of our projects range from providing the finest finishing touches to a single room through to the bespoke fit out of an entire building

MEP Services- Our specialists mechanical and electrical engineers constitute the MEP Division. The mechanical engineers design and oversee the heating, ventilation, and air conditioning (HVAC), plumbing and rain gutler systems. Our fire protection engineers design active fire protection systems for small or complicated projects. Our electrical engineers are responsible for project's power distribution, telecommunication, fire alarm, lighting protection, lighting system as well as control system

Service we provide, including....

Refurbishment- A true understanding of how your business operates, careful planning, and professional, experienced installation teams ensures that we have one of the best reputations in the industry for delivering successful refurbishment projects to our clients

Value Engineering- We have strong experience in delivering world class quality fit outs to demanding budgets. We can provide alternatives to specified products and finishes by using our network of local and international suppliers to ensure design intent is maintained with budgets realigned to client expectations

Design & Build (Design Only, Build Only) - We use all our years of experience to build relationships with world class design consultants who create bespoke interiors of the highest standard from humble practical

1.6 Our Personnel / Our Team

Staffed multinationally from the India, Singapore, Malaysia, Vietnam, Thailand, and Indonesia, **D.G. Interiors** Combines knowledge and skills of worldwide trained and qualified personnel assuring the whole work through the benefits of international and local practice.

“Good employees are the foundation on which our company is built. We have a professional multinational team with rich experiences in this field.”

1.7 D.G. Interiors- Company Objectives & Quality Assurance

D.G. Interiors is committed to delivering the highest quality service to its customers while ensuring sustainable profitability and fostering employee growth. The company primarily serves small to large-sized businesses, supplying products both to its parent company and directly to its own clientele, in collaboration with architects.

As a trusted manufacturer of premium wooden interior and joinery products, D.G. Interiors takes pride in delivering high-quality, on-time solutions that meet exact specifications. The company values long-term client relationships and strives to maintain its strong industry reputation.

Quality Assurance Policy:

D.G. Interiors is dedicated to providing products and services that align with customers' technical and commercial requirements, adhering to relevant industry standards and best practices. This commitment is reflected in:

- ✓ Building long-term trust with clients to enhance repeat business
- ✓ Accurately recording client requirements and providing prompt quotations
- ✓ Manufacturing products to the highest quality standards to meet customer expectations
- ✓ Ensuring timely delivery while meeting customers' specific needs
- ✓ Addressing any concerns regarding service standards or product quality promptly and effectively
- ✓ Continuously improving service offerings to enhance customer satisfaction

1.7 D.G. Interiors - Company Objectives & Quality Assurance....

- ✓ Building long-term trust with clients to enhance repeat business
- ✓ Accurately recording client requirements and providing prompt quotations
- ✓ Manufacturing products to the highest quality standards to meet customer expectations
- ✓ Ensuring timely delivery while meeting customers' specific needs
- ✓ Addressing any concerns regarding service standards or product quality promptly and effectively
- ✓ Continuously improving service offerings to enhance customer satisfaction

To achieve these objectives, D.G. Interiors maintains and operates a Quality Management System that all employees adhere to. The company emphasizes high performance standards and structured procedures to ensure an efficient, reliable, and customer-focused service experience.





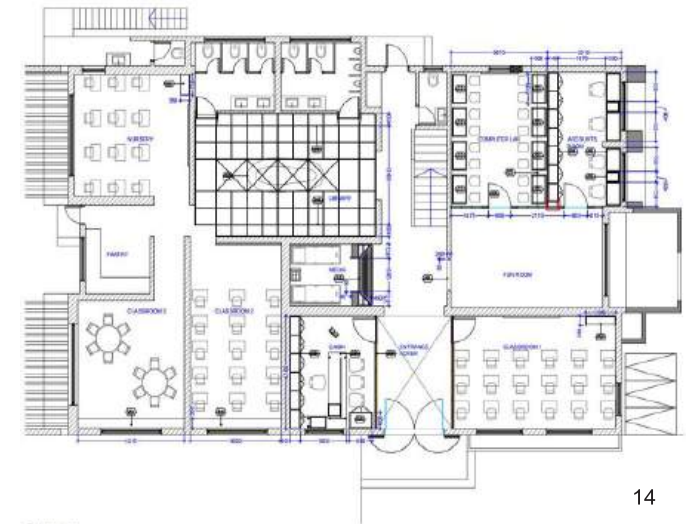
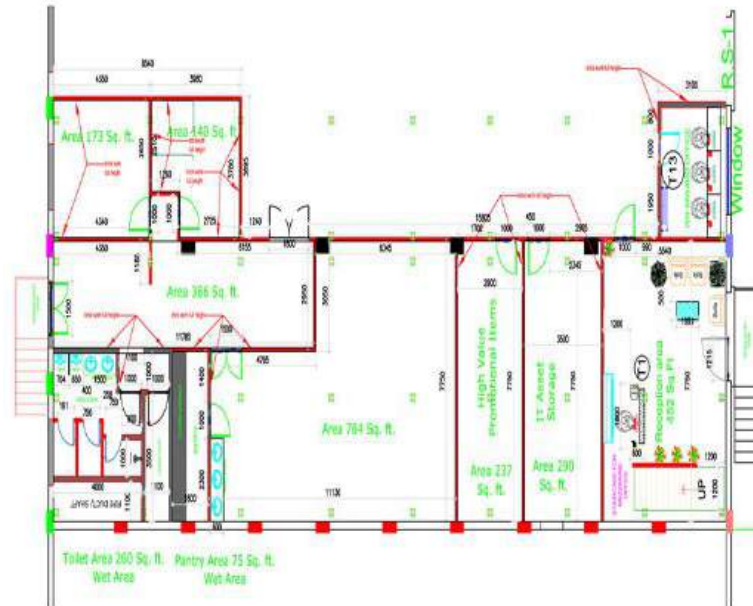
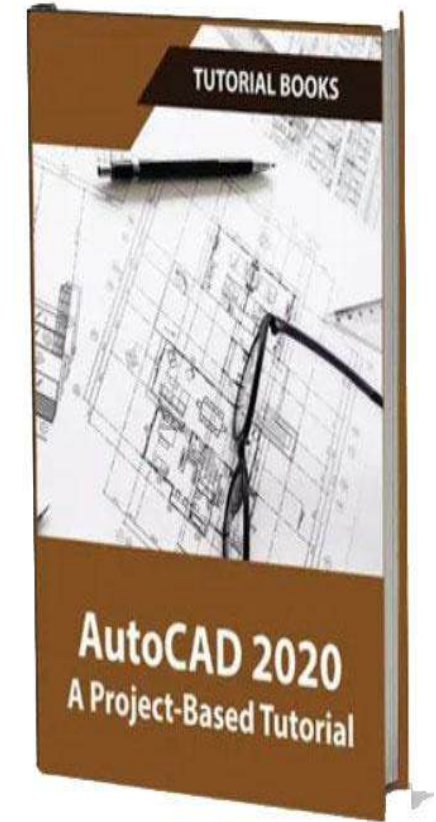
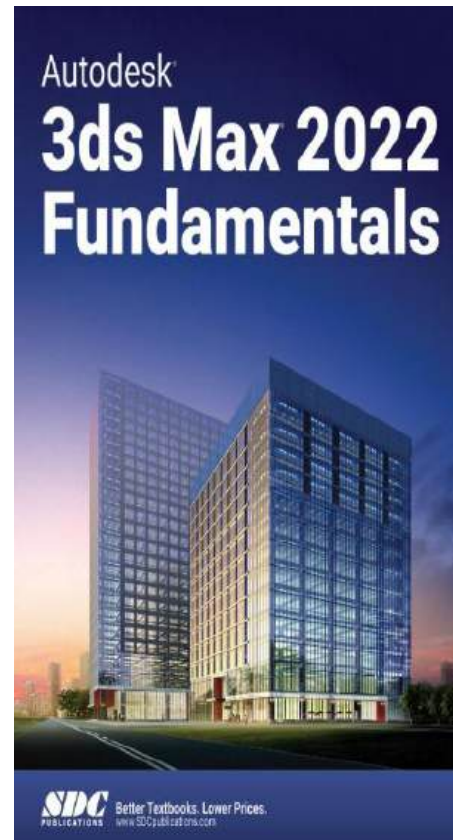
Technical

OVERVIEW

- Overview of hardware and software
- Project Philosophy
- Sector Experience

2.1 Interior Design Tools

- Autodesk AutoCAD (2D & 3D)
- Adobe Photoshop
- Autodesk 3ds Max
- CorelDRAW
- V-Ray
- Google SketchUp
- 3D Rendering Software (Various)



2.2 Process Charts

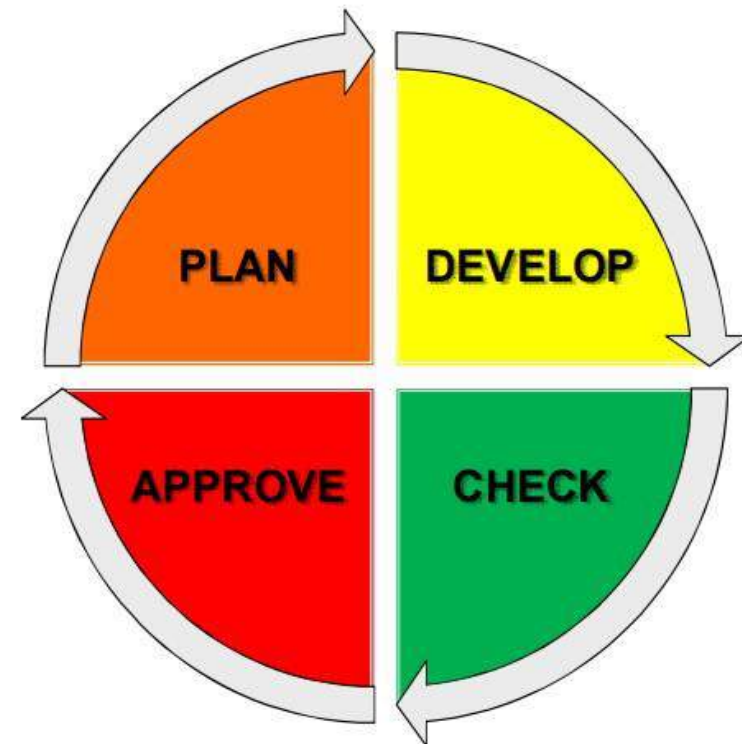
PDCA— Plan – Develop – Check – Approve – Plan ... (Circular Management)

PLAN : Identify Process, Establish Criterion of Operation & Control

DEVELOP : Develop according to the Plan

CHECK : Monitor & Measure

APPROVE : Take Measures Keep Improvement



2.3 Turnkey Solutions, Approach & Process

Project Development Phases

1. Planning Phase:

- ✓ Provide a detailed quotation for project implementation
- ✓ Develop electrical and data layout
- ✓ Offer technical references and case analysis to clients
- ✓ Environmental control – Consult specialists and provide drawings for service layouts
- ✓ Security planning – Using in-house consultants or preferred client suppliers
- ✓ Fire safety approvals

2. Construction Phase:

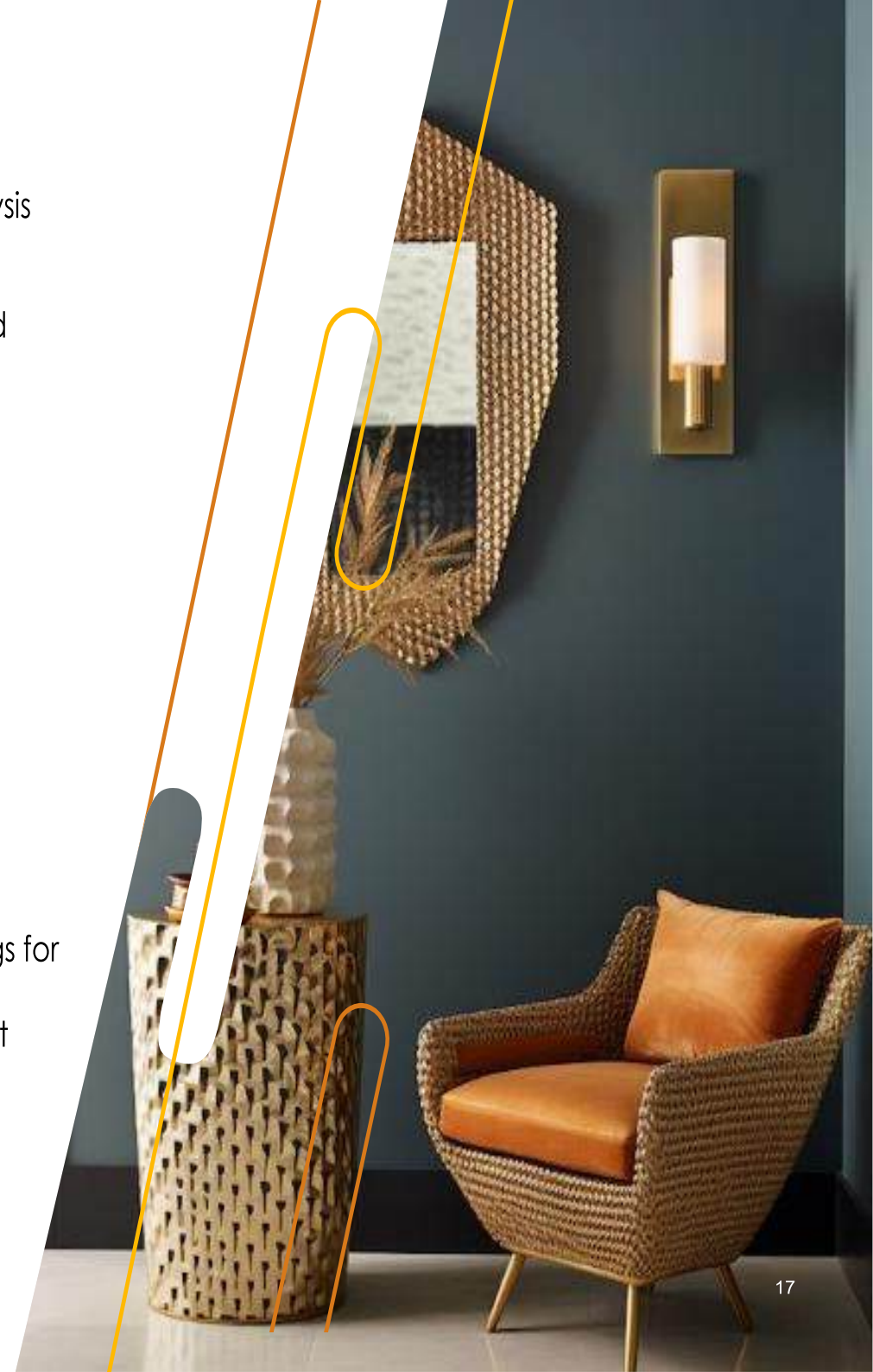
- ✓ Ensure project security, quality control, and progress tracking
- ✓ Manage documentation, field coordination, and data organization
- ✓ Oversee physical distribution and track deliveries to ensure prompt arrival
- ✓ Provide training on product knowledge and technical information
- ✓ Coordinate relocation or transition from the current space to the new location

3. Design Proposal Phase:

- ✓ Space planning based on initial questionnaire and space analysis
- ✓ Incorporate corporate identity into design presentation
- ✓ Present a personalized design proposal with sample boards and budgetary estimates
- ✓ Suggest furniture solutions that complement the environment
- ✓ Provide lighting solutions to enhance the final layout
- ✓ Address specialized areas (e.g., office spaces, boardrooms, reception areas, and meeting rooms)
- ✓ Deliver 3D renderings to visualize the final look and feel

4. Planning Phase:

- ✓ Provide a detailed quotation for project implementation
- ✓ Develop electrical and data layout
- ✓ Offer technical references and case analysis to clients
- ✓ Environmental control – Consult specialists and provide drawings for service layouts
- ✓ Security planning – Using in-house consultants or preferred client suppliers
- ✓ Fire safety approvals



2.3 Turnkey Solutions, Approach & Process...

5. Construction Phase:

- ✓ Ensure project security, quality control, and progress tracking
- ✓ Manage documentation, field coordination, and data organization
- ✓ Oversee physical distribution and track deliveries to ensure prompt arrival
- ✓ Provide training on product knowledge and technical information
- ✓ Coordinate relocation or transition from the current space to the new location

6. Acceptance of Completed Projects:

- ✓ Organize project checkout and final inspections
- ✓ Facilitate official acceptance and handover of completed projects
- ✓ Maintain comprehensive project records
- ✓ Conduct post-project evaluation to assess success and improvements

With a commitment to excellence and innovation, we strive to enhance interior spaces and create lasting impressions.





INFORMATION DETAILS AND PHOTOGRAPHS



D.G. Interiors

3.1 Production Facilities

With a purpose-built, in-house production facility, D.G. Interiors is equipped with a fully automatic, computerized Italian painting plant featuring online spraying and drying facilities for wooden components. Additionally, it utilizes top-grade, state-of-the-art CNC routers, profile sanders, and other advanced woodworking machinery and equipment from Germany and Italy to achieve the highest industry quality standards



Italian CEFLA automated computerized Wood spraying 86 painting system



German HOLZER CNC Router Fully automated specialized in



Fully automatic multipurpose spindle moulder Heavy Duty Machinery ideal for production of most joinery product's rebating, grooving, and moulding



German HOLZER Edge Bander Automated CNC machine capable of panels, doors, and soft wood products



A heavy duty veneer & laminating press made with solid steel platens



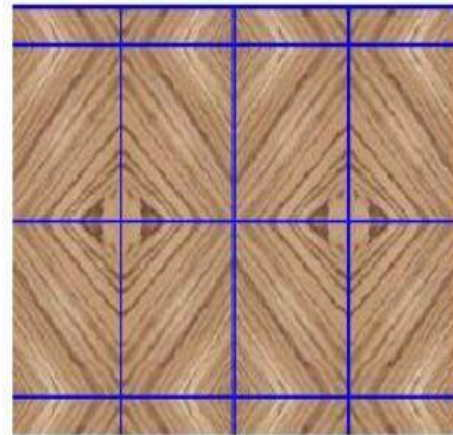
German HOLZER Panel Cutter Fully Responsible For banding edges for cutting 8 panels at a time

3.2 Architraves & Skirting

A space reflects individual style, so why not complete it with the perfect interior finishes? Enhance your doors, windows, flooring, and walls with a broad selection of prestige architraves and skirting designs, available in a wide range of materials to complement any architectural style. Whether you prefer traditional heritage, colonial charm, or modern contemporary elegance, D.G. Interiors has the perfect style solution for you.



Veneer Matching Methods



Diamond Match

Diamond matching is typically used with straight grain veneer. When a rectangle is divided into four quadrants, the veneer is arranged at an angle to the quadrant lines, creating a distinct "V" pattern. This results in a symmetrical diamond shape formed by the natural grain directions.

Reversed Diamond Match

Reversed diamond matching is also commonly applied to straight grain veneer. Similar to the diamond match, the rectangle is divided into four quadrants. However, in this method, the grain directions extend outward from the center point toward the edges of each quadrant. This arrangement creates a series of "V" shapes at the joint lines, converging toward the center, producing a striking visual effect.

3.3 Wooden Carving

D.G. Interiors is committed to delivering high-quality wooden carvings to our clients. Our skilled professionals intricately craft designs on premium-quality wood, ensuring elegance and durability. Available in a variety of designs, finishes, and sizes, our products cater to diverse styles and preferences. We take pride in offering exceptional craftsmanship at competitive prices, making luxury woodwork accessible to our valued customers.

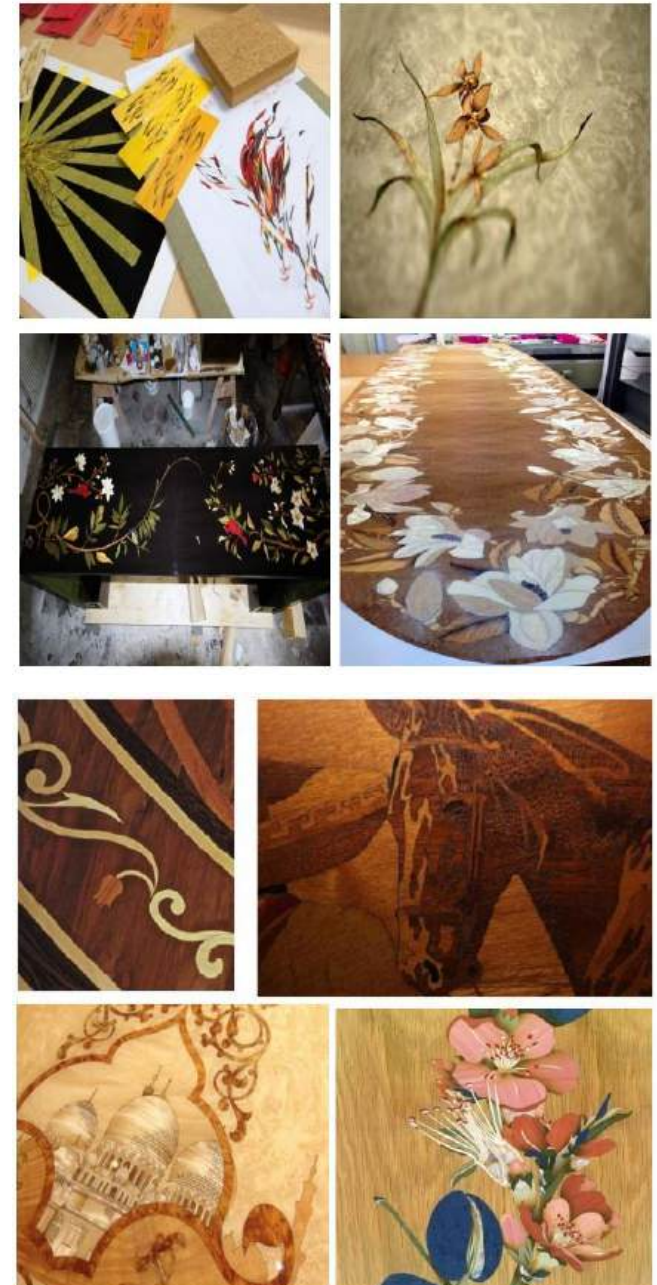


3.4 Marquetry

A time-traveling marqueteur stepping into our workshops would instantly recognize the artistry at play—fine sheets of timber, each tiny piece of veneer carefully selected, the traditional sand-scorching technique used to create depth and shadow, and the meticulous hand assembly of intricate designs, all done in reverse.

Where our visiting marqueteur would be truly astonished, however, is in the modern applications of marquetry. No longer confined to fine furniture, this exquisite craft has become the luxury material of choice for **yacht designers, aviation studios, car manufacturers, interior designers, and architects**. Celebrated not just for its artistic and decorative appeal but also for its **durability, versatility, and timeless elegance, marquetry** continues to redefine contemporary design.

At **D.G. Interiors**, marquetry is more than a technique—it's a limitless creative palette. Working collaboratively with our clients, we craft bespoke designs that go beyond aesthetic beauty to reflect **personal stories, individual style, and a deep connection to material and motif**. Once you begin to see the possibilities, your imagination can take flight.



3.5 Fire-Rated & Non-Fire-Rated Doors

At **D.G. Interiors**, we offer a wide range of certified Fire-Rated and Non-Fire-Rated Doors, designed to provide both safety and style. Whether you're looking for a simple, functional design or a stunning statement piece, our doors create the perfect first impression for your home, retail space, office, hotel, and more.

With limitless customization options, you can choose from various:

- ✓ Colors
- ✓ Shapes
- ✓ Sizes
- ✓ Details & Finishes
- ✓ Styles

Our doors combine aesthetic appeal with high-quality craftsmanship, ensuring durability, security, and fire protection where needed. DG Interior is your trusted partner for premium door solutions tailored to your unique space.



3.6 Our Factory: Where Craftsmanship Meets Innovation

At **D.G. Interiors**, “**Handmade**” is more than just a label—it’s a commitment to excellence. Our fine furniture is crafted by highly skilled artisans, whose expertise transforms raw materials into masterpieces.

While we uphold the tradition of handcrafted artistry, we also integrate cutting-edge tools and technology to ensure precision, durability, and perfection in every piece we create.

- ✓ **Expert craftsmanship by skilled artisans**
- ✓ **State-of-the-art tools & modern technology**
- ✓ **Uncompromising quality & attention to detail**

At **D.G. Interiors**, we blend artistry with innovation, delivering high-quality furniture that stands the test of time. **Precision for Perfection.**

Production Centers

At D.G. Interiors, our state-of-the-art production centers are strategically located across Asia, ensuring efficient manufacturing, high-quality craftsmanship, and global reach.

Our Facilities:

India

Indonesia

Thailand

With a strong **manufacturing infrastructure**, we are committed to delivering **precision, innovation, and excellence** in every product we create.

3.7 Some of Completed Projects....

Birla Group Svatantra Online PVT LTD - Mumbai, India

Scope of Work

- ❖ Civil Interior & MEP Work
- ❖ Space Planning
- ❖ Concept Development
- ❖ Furniture & Fixture Selection
- ❖ Lighting Design
- ❖ Color Scheme & Textures
- ❖ Decorative Elements
- ❖ Custom Joinery & Carpentry
- ❖ Plumbing & Sanitary Work
- ❖ Electrical & Smart Home Integration
- ❖ Safety & Compliance



Hotel Sahara Star – Mumbai, India

Scope of Work

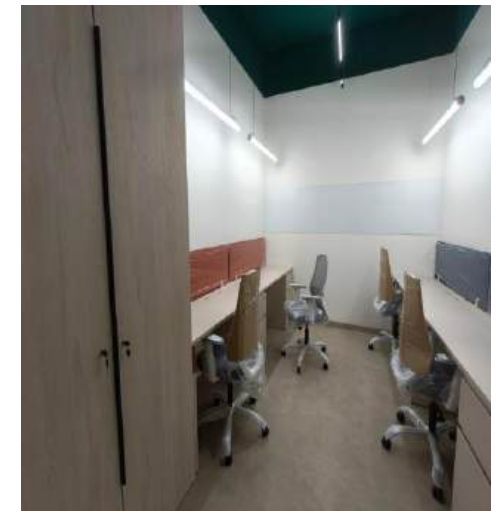
- ❖ Civil Interior & MEP Work
- ❖ Space Planning
- ❖ Concept Development
- ❖ Furniture & Fixture Selection
- ❖ Lighting Design
- ❖ Color Scheme & Textures
- ❖ Decorative Elements
- ❖ Custom Joinery & Carpentry
- ❖ Plumbing & Sanitary Work
- ❖ Electrical & Smart Home Integration
- ❖ Safety & Compliance



Saudi Airline - Kochi, India

Scope of Work

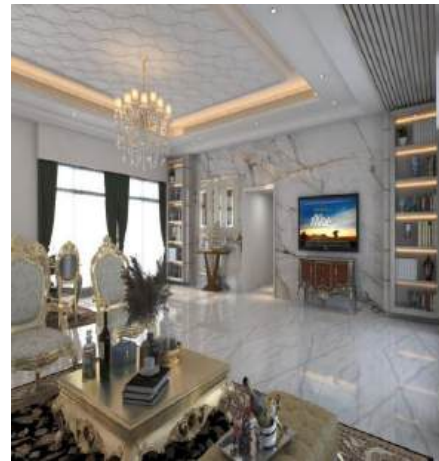
- ❖ Civil Interior & MEP Work
- ❖ Space Planning
- ❖ Concept Development
- ❖ Furniture & Fixture Selection
- ❖ Lighting Design
- ❖ Color Scheme & Textures
- ❖ Decorative Elements
- ❖ Custom Joinery & Carpentry
- ❖ Plumbing & Sanitary Work
- ❖ Electrical & Smart Home Integration
- ❖ Safety & Compliance



M. J. Shaha 81 Aureate - Mumbai, India

Scope of Work

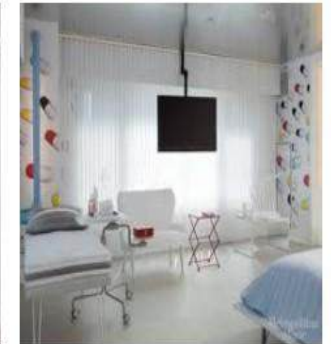
- ❖ Civil Interior & MEP Work
- ❖ Space Planning
- ❖ Concept Development
- ❖ Furniture & Fixture Selection
- ❖ Lighting Design
- ❖ Color Scheme & Textures
- ❖ Decorative Elements
- ❖ Custom Joinery & Carpentry
- ❖ Plumbing & Sanitary Work
- ❖ Electrical & Smart Home Integration
- ❖ Safety & Compliance



Wockhardt Hospital – Mumbai, India

Scope of Work

- ❖ Civil Interior & MEP Work
- ❖ Space Planning
- ❖ Concept Development
- ❖ Furniture & Fixture Selection
- ❖ Lighting Design
- ❖ Color Scheme & Textures
- ❖ Decorative Elements
- ❖ Custom Joinery & Carpentry
- ❖ Plumbing & Sanitary Work
- ❖ Electrical & Smart Home Integration
- ❖ Safety & Compliance



Inizio Office - Mumbai, India

Scope of Work

- ❖ Civil Interior & MEP Work
- ❖ Space Planning
- ❖ Concept Development
- ❖ Furniture & Fixture Selection
- ❖ Lighting Design
- ❖ Color Scheme & Textures
- ❖ Decorative Elements
- ❖ Custom Joinery & Carpentry
- ❖ Plumbing & Sanitary Work
- ❖ Electrical & Smart Home Integration
- ❖ Safety & Compliance



Techno Business IT – Mumbai, India

Scope of Work

- ❖ Civil Interior & MEP Work
- ❖ Space Planning
- ❖ Concept Development
- ❖ Furniture & Fixture Selection
- ❖ Lighting Design
- ❖ Color Scheme & Textures
- ❖ Decorative Elements
- ❖ Custom Joinery & Carpentry
- ❖ Plumbing & Sanitary Work
- ❖ Electrical & Smart Home Integration
- ❖ Safety & Compliance



Hilton Hotel – Pattaya, Thailand

Scope of Work

- ❖ Civil Interior & MEP Work
- ❖ Space Planning
- ❖ Concept Development
- ❖ Furniture & Fixture Selection
- ❖ Lighting Design
- ❖ Color Scheme & Textures
- ❖ Decorative Elements
- ❖ Custom Joinery & Carpentry
- ❖ Plumbing & Sanitary Work
- ❖ Electrical & Smart Home Integration
- ❖ Safety & Compliance



Scope of Work

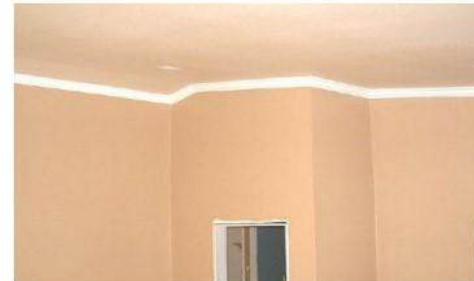
- ❖ Civil Interior & MEP Work
- ❖ Space Planning
- ❖ Concept Development
- ❖ Furniture & Fixture Selection
- ❖ Lighting Design
- ❖ Color Scheme & Textures
- ❖ Decorative Elements
- ❖ Custom Joinery & Carpentry
- ❖ Plumbing & Sanitary Work
- ❖ Electrical & Smart Home Integration
- ❖ Safety & Compliance



Wooden, Parquet Flooring



Wooden, Solid Wood Flooring



Painting, Wall Painting



Painting, Ceiling Painting



Interior Civil Work, Screed



Interior Civil Work, Block



Tiles Fixing, Wall Tiles



Tiles Fixing, Flooring

3.8 Some of Work Progress.....

Scope of Work

- ❖ Civil Interior & MEP Work
- ❖ Space Planning
- ❖ Concept Development
- ❖ Furniture & Fixture Selection
- ❖ Lighting Design
- ❖ Color Scheme & Textures
- ❖ Decorative Elements
- ❖ Custom Joinery & Carpentry
- ❖ Plumbing & Sanitary Work
- ❖ Electrical & Smart Home Integration
- ❖ Safety & Compliance



Gypsum Ceiling



Two Level Gypsum Ceiling



Acoustic Ceiling



Acoustic Ceiling



Gypsum Partition / Ceiling



Gypsum Partition / Ceiling



Wooden Wall, Painting



Wooden Wall, Painting

3.8 Some of Work Progress.....

Scope of Work

- ❖ Civil Interior & MEP Work
- ❖ Space Planning
- ❖ Concept Development
- ❖ Furniture & Fixture Selection
- ❖ Lighting Design
- ❖ Color Scheme & Textures
- ❖ Decorative Elements
- ❖ Custom Joinery & Carpentry
- ❖ Plumbing & Sanitary Work
- ❖ Electrical & Smart Home Integration
- ❖ Safety & Compliance



Gypsum Ceiling



Two Level Gypsum Ceiling



Acoustic Ceiling



Acoustic Ceiling



Gypsum Partition / Ceiling



Gypsum Partition / Ceiling



Wooden Wall, Painting



Wooden Wall, Painting



AFTER SALES SERVICE



D.G. Interiors

After-Sales Services

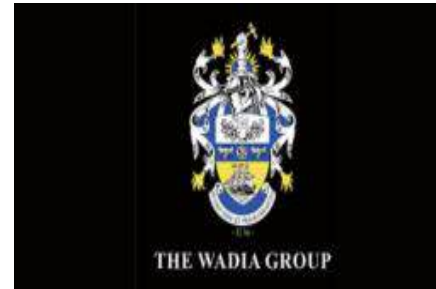
At **D.G. Interiors**, we are committed to providing **exceptional after-sales support**, ensuring long-term reliability and customer satisfaction.

- ✓ **24/7 Emergency Repairs** – Quick response within **24 hours**, with defect rectification and improvement options **within 28 hours**.
- ✓ **Spare Parts Supply** – Readily available **glass, silica gel, bolts, and other essential components** for seamless maintenance.
- ✓ **Customized Maintenance Strategies** – Tailored solutions and **staff training programs** to help businesses **reduce maintenance costs** by performing **routine maintenance and troubleshooting** effectively.
- ✓ **Product Liability Insurance & Quality Guarantee** – Assurance of **high-quality products** backed by industry-standard **warranties and insurance** for client confidence.

With **D.G. Interiors**, you receive **reliable, results-driven support** beyond installation, ensuring **long-term performance and peace of mind**.



1.8 Our Prestigious Clients



Reach Us

Head Registered Office : office no 2,, suyog sadan 1nd floor nehru road,

Anand Nagar Santacruz (East)

Opp Pravin Kumar and Sons

Mumbai-400055

Address : F-101, Kohinoor City Mall, Kirol Road, Kurla West,

Mumbai - 400070

Phone : +91 90048 30995

+91 94528 93458

Office No : +91 74004 41982

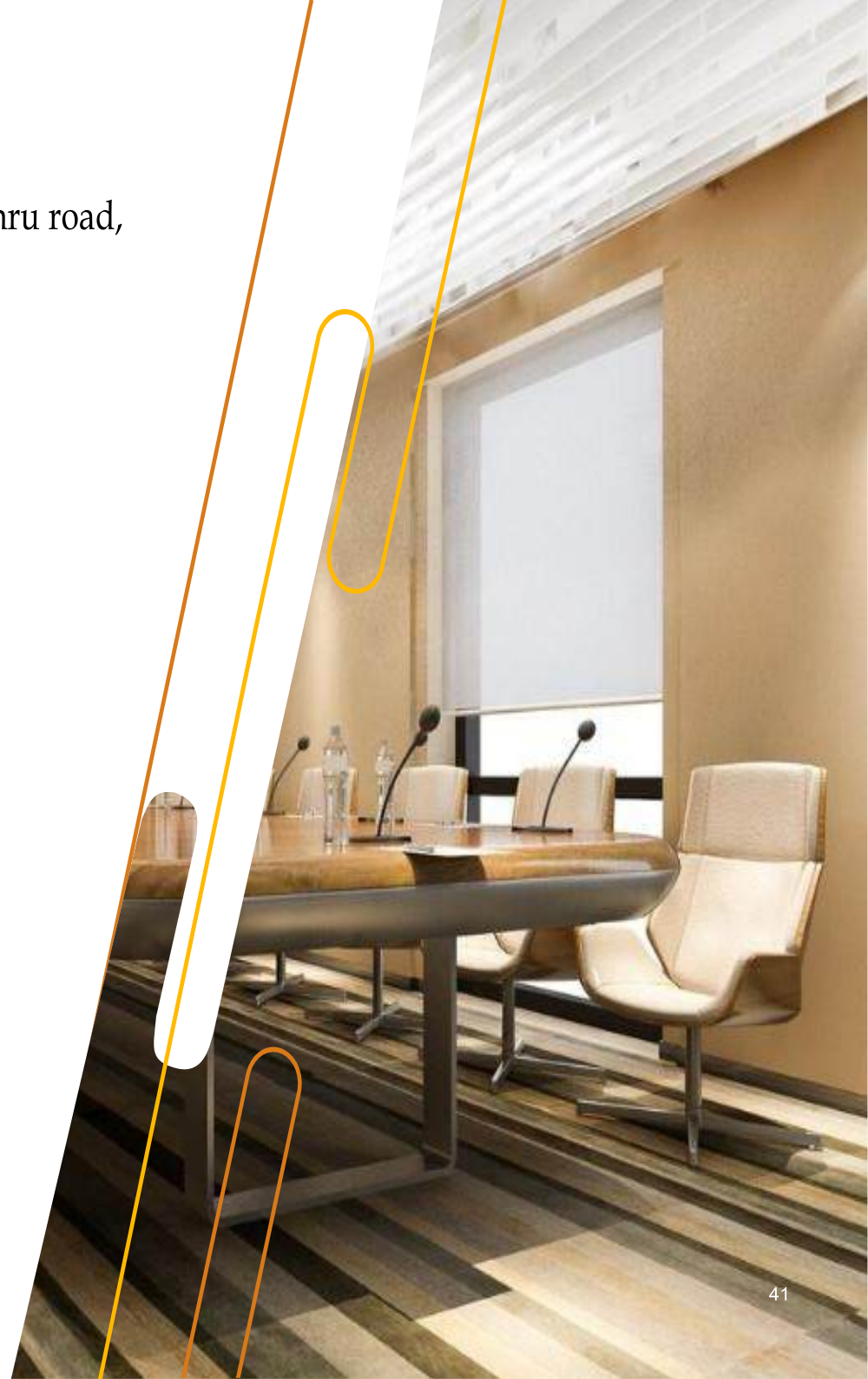
Email : info@dginterior.in

dilip@dginterior.in

dginterioroffice@gmail.com

dilipguptadginterior@gmail.com

Website : www.dginterior.in





Thank you